



# Unsanded Thin Set #711

DRY SET MORTAR OR BOND COAT

## PRODUCT INFORMATION

**DESCRIPTION:** SGM Unsanded Thin Set is specifically formulated for installation of vitreous and/or low absorption tiles.

**LIMITATIONS:** SGM Unsanded Thin Set must not be used directly over wood, cement asbestos board, masonite, existing ceramic tile, metal, glass, plastic or painted surfaces. Excessive water in mixing will dilute and effect the bond strength and reduce overall performance. For additional strength add Southcrete 30 in lieu of water.

### USES:

- Vitreous Tiles
- Vertical Installations
- Semi-vitreous Tiles
- Horizontal Installations

### PREPARATIONS:

Floors must be 28 days cured and free of moisture. Floors must be free of any wax, oil, dust or paint overspray. Hence, any further cleaning shall be done using SGM Safe Clean Crystals, refer to Safe Clean label directions. Remove all liquid curing agents. All materials and areas to be tiled should remain above 40° F 24 hours prior and 72 hours after installation.

### APPLICATION & MIXING:

Before mixing, add one and one-half volumes of medium textured, clean sand to volume of unsanded pre-mix before adding water. Add approximately 1 1/2 gallons of cool, clean water to dry mix to form a smooth paste like trowable mix. Allow mix to slake for 5-10 minutes, then remix before use. Machine mixing is preferred (250-350 R.P.M.) higher speeds are not recommended. Stir occasionally during use. Apply mortar liberally with flat side of trowel, using sufficient pressure to work mortar in good contact. Use proper size notched trowel (see diagram) to insure 100% coverage of mortar under tiles. Some irregular tiles require backbuttering. Place tiles while surface is still wet and tacky. Spread only as much mortar as can be covered in 15-20 minutes or before surface dries, place tiles with a twisting motion and beat tiles with a rubber mallet to insure 100% coverage. Industry standards require approximately 3/32" to 1/8" mortar bed thickness after beat in. A 1/8" gap shall be left around all vertical surfaces to allow for structural movement. Follow ANSI 108.5 specifications for installation.

### GROUTING:

Normal grouting can be done 48 hours after installation, using SGM Security Polymer grout.

### CURING:

Minimum cure is reached in 24 hours. Any type of traffic shall be restricted to 72 hours. Setting and drying time may vary according to atmospheric conditions.

### CLEAN UP:

Clean up hands and tools with a warm soapy water before materials dry.

### PACKAGING:

25 net pounds (11.35 kg.)

### SHELF LIFE:

One year in unopened properly stored container.

### SPECIFICATIONS:

Meets ANSI 118.1 for Dry-Set Portland Cement Mortar.

### WARNING:

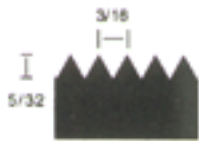
Product is Alkaline on contact with water. Use paddle for mixing to avoid splashing into eyes or contact with skin. During mixing or application, avoid contact with eyes. In case of such contact flood eyes repeatedly with water and CALL PHYSICIAN. Wash thoroughly after handling and before smoking or eating. Do not take internally. CONTAINS FREE SILICA DO NOT BREATHE DUST. Prolonged exposure to dust may cause delayed lung disease (silicosis). Wear NIOSH approved mask for silica dust. ALL PORTLAND CEMENT BASED PRODUCTS MAY CONTAIN DETECTABLE AMOUNTS OF CHEMICALS KNOWN TO THE STATE OF CALIFORNIA TO CAUSE CANCER, BIRTH DEFECTS OR OTHER REPRODUCTIVE HARM. THIS IS IN COMPLIANCE TO PROPOSITION 65.

### LIMITED WARRANTY:

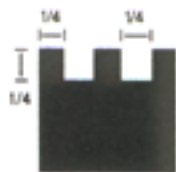
SGM, Inc. will replace any material proved defective with the maximum shelf life on unused material of up to one (1) year. If our products are not found to conform to our high standards, notify SGM, Inc. immediately in writing. There is no other obligation expressed or implied and we assume no liabilities for damages of any kind. Suitability of the product for an intended use shall be solely up to the user.

4-1/4 wall tile and ceramic mosaics on dry wall:

3/16 x 5/32



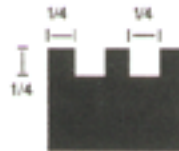
1/4 x 1/4



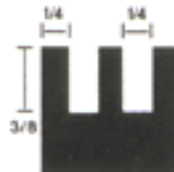
6x6 and larger on dry wall

4-1/4 wall tile and ceramic mosaics on masonry and concrete:

1/4 x 1/4

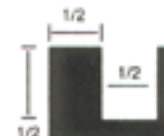
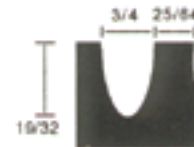


1/4 x 3/8



6x6 and larger on masonry walls or concrete:

12x12 and larger size tiles on masonry or concrete, tiles with thickness variation, substrate irregularities:



NOTE: Trowel diagrams not drawn to scale.

### TECHNICAL ASSISTANCE

For product use and installation recommendations contact a Technical Service Representative at 800-641-9247 (fax) 954-943-2402

Distributed by: